

THE /COOL/ POOL

ALL THE LATEST FROM THE UK'S MARKET LEADER

THE BENEFITS OF AQUA EXERCISE:
WHY WATER WORKOUTS ARE
MAKING WAVES

MEET OUR TEAM
CERTIKIN'S SALES EXECUTIVES

INTRODUCING
BERMUDA & AFFINITY



ISSUE 8 JULY 2025

Certikin
FLUIDRA

INTRODUCING

THE FUTURE OF POOL EFFICIENCY



THE ALL NEW CERTIKIN INVERTER POOL PUMP



Ultra-efficient inverter technology



Quiet, even at full power



Consistent flow,
maximum performance



Easy to use, built to last



Eco-friendly & future-ready



Ultimate value for money

 **INVERSilence[®] Tech**



SMART & SIMPLE
INTERFACE



SMARTER, QUIETER, GREENER

The pool pump is the heart of the swimming pool and for decades people have been using single-speed pumps, which have high energy consumption and generate significant noise.

InverSilence technology has been developed to address these problems and it is this intelligent technology which features in the new Certikin Inverter Pool Pump. Engineered for performance, designed for sustainability, and built to last – this game-changing pump redefines what's possible in pool circulation: powerful performance with whisper-quiet operation and unmatched energy savings, all in one sleek, robust unit.

ULTRA-EFFICIENT INVERTER TECHNOLOGY

Unlike traditional single-speed pumps, the Certikin Inverter Pool Pump with its InverSilence technology automatically adjusts its speed to meet demand – using up to 90% less energy. That means lower running costs and a greener pool all year round. While many inverter pumps use IE3 motors, Certikin's IE4 motor offers superior energy efficiency for even greater peace of mind.

QUIET, EVEN AT FULL POWER

Thanks to its precision engineering and variable-speed operation, the pump runs at 36dB, a 40% reduction on traditional on/off single speed pumps.

CONSISTENT FLOW, MAXIMUM PERFORMANCE

Whether it's filtration or backwashing, the inverter technology provides consistent water flow, adapting intelligently for optimal performance and longevity of your entire pool system.

EASY TO USE, BUILT TO LAST

With a user-friendly digital interface and rugged, corrosion-resistant components, the Certikin Inverter Pump is built for hassle-free operation and years of reliable use – even in tough pool environments.

ECO-FRIENDLY & FUTURE-READY

Ideal for eco-conscious pool owners, this pump significantly reduces your carbon footprint whilst meeting the latest energy-efficiency regulations.



FIND OUT MORE AT
WWW.CERTIKIN.CO.UK

Down to 36dB

DISTRIBUTED EXCLUSIVELY
IN THE UK BY CERTIKIN



www.thecoolpool.co.uk

The latest news and advice at your fingertips

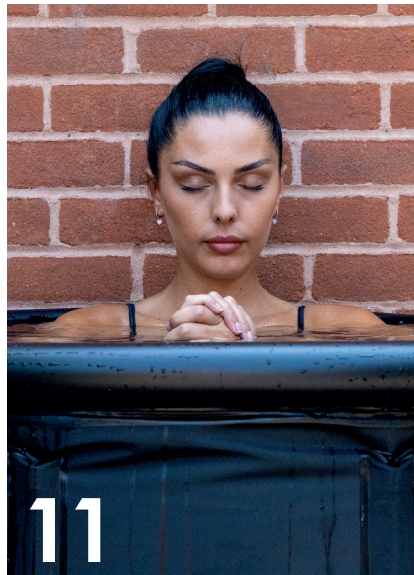
Published by the Certikin
Marketing Team with Penny
Farmer contributing as
Features Writer.

No part of this publication
maybe reproduced
without prior permission of
Certikin International.



09

CONTENTS



11



13

SPOTLIGHT

- 06** The benefits of aqua exercise
- 09** Dubai's 85-story building will stand at a huge 300 metres tall
- 10** How industry guidance on cold water immersion is supporting the wet leisure sector
- 12** Bucket List getaways
- 14** UK Pool and Hot Tub Industry embraces equality, diversity, and inclusion with new training programme
- 15** Spring update from Chris Hayes: A busy start to 2025!
- 17** EUSA awards
- 19** The importance of training and continuous professional development in swimming pool engineering

CERTIKIN HQ

- 20 Meet our Sales Executives
- 22 The Engine Room behind the UK's Market Leader
- 23 Outstanding Employee of the Season
- 23 Long Service Award
- 24 Introducing Bermuda
- 24 Introducing Affinity

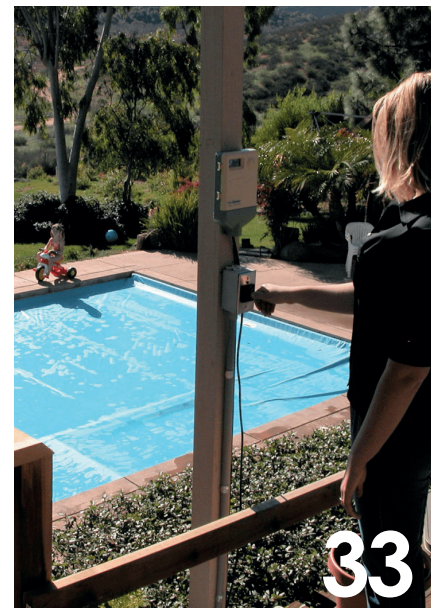


PRODUCT HIGHLIGHTS

- 30 Aquaspeed, Vision Filters, PU2 Lights, Maintenance Equipment, Fastlane
- 31 Wooden Pools, Patterned Pool Fittings, Genie Boilers

PRODUCTS

- 32 Coverstar HQ Visit
- 34 AFM – Have you got the bottle
- 32 Advantages of swimming heat pump dehumidifiers



THE BENEFITS OF AQUA EXERCISE:



WHY WATER WORKOUTS ARE MAKING WAVES

Aqua exercise, also known as water-based or aquatic exercise, has gained popularity as a low-impact yet highly effective way to improve overall fitness. Whether you're a senior looking for joint-friendly movement, an athlete recovering from injury, or simply someone who enjoys a refreshing workout, aqua exercise offers a wide range of physical and mental benefits. This article explores the key advantages of exercising in water and why it's a smart choice for people of all ages and fitness levels.

1. LOW-IMPACT ON JOINTS

One of the most significant benefits of aqua exercise is its low-impact nature. Water provides natural buoyancy, which supports the body and reduces stress on joints, bones, and muscles. This makes it an ideal form of exercise for individuals with arthritis, osteoporosis, or those recovering from surgery or injury. Unlike running or weight training, aqua workouts minimize the risk of impact-related injuries.

2. IMPROVED CARDIOVASCULAR HEALTH

Water-based aerobic activities – such as aqua jogging, water aerobics, or swimming laps – can help improve heart health by increasing circulation, strengthening the heart muscle, and reducing blood pressure. The resistance

of the water also provides a natural form of strength training, contributing to overall cardiovascular endurance.

3. FULL-BODY WORKOUT

Exercising in water engages multiple muscle groups simultaneously. Movements like leg lifts, arm circles, and core exercises face more resistance in water than in air, leading to enhanced muscular endurance and strength. This resistance also increases calorie burn, making aqua exercise an efficient way to manage weight.

4. ENHANCED FLEXIBILITY AND BALANCE

The resistance and support of water help improve flexibility and balance. The body has to constantly adjust to maintain stability, which strengthens the core and improves coordination. Stretching in the water can be easier and more effective because the warmth and buoyancy help relax the muscles.

5. MENTAL HEALTH AND STRESS RELIEF

Water has a calming effect on the body and mind. Aqua exercise promotes relaxation and reduces stress and anxiety. The soothing environment of a pool, combined with rhythmic movement and deep breathing, can significantly improve mental well-being and help with sleep quality.

6. ACCESSIBILITY AND INCLUSIVITY


Aqua exercise is accessible to people of all fitness levels, including seniors, pregnant individuals, and those with disabilities. Many community centers and fitness clubs offer structured aqua classes led by trained instructors, making it easy for beginners to join and benefit from the workouts.

7. FUN AND VARIETY

Working out in water is often more enjoyable than traditional land-based exercise. Group aqua classes add a social element and often incorporate music, games, and varied routines to keep participants engaged and motivated.

CONCLUSION

Aqua exercise offers a unique combination of cardiovascular, strength, and flexibility training, all while being gentle on the body. Whether you're looking to stay active, recover from injury, or simply enjoy a refreshing workout, incorporating water-based activities into your routine can provide lasting physical and mental benefits. So dive in – the pool might just be your new favourite gym.



CERTIKIN'S BESPOKE HDPE PRODUCTS



OUR IN-HOUSE PRODUCTION FACILITY IS ABLE TO MANUFACTURE A RANGE OF NEW AND REPLACEMENT PRODUCTS USING HIGH DENSITY POLYETHYLENE (HDPE)

This material offers high chemical resistance, is UV stable and is virtually unbreakable. It is available in an extensive colour palette which includes most RAL colours.

For further details or to discuss your next project contact our Commercial Division.



LIBERTY™ 600

CORDLESS POOL CLEANING

THE DOLPHIN WAY!



STEPS JET-CLEANING

Designed to provide complete pool coverage, including pool steps



ECO MODE

2 weeks clean on a single charge



RUST-RESISTANT CHARGER

Guaranteed



HIGH CAPACITY BATTERY

Runs for up to 4.5 hours, perfect for mid to large sized pools

maytronics



DUBAI'S 85-STORY BUILDING WILL STAND AT A HUGE 300 METRES TALL



An elaborate 85-story building is currently under construction in Dubai. The Safa Two landmark which is being built on Sheikh Zayed Road is a jewel-inspired structure that will stand at a huge 300 metres tall, providing spectacular views. As well as the luxury apartments, the rooftop will boast an indoor fog forest, skyline observatory, and expansive terraces with panoramic views of Dubai. The centrepiece of Safa Two is its floating, fully translucent infinity pool – a truly awe-inspiring feature designed to offer a serene escape high above the city.

Photo credit: DAMAC Properties / Killa Design





A VITAL LEAP FORWARD

HOW INDUSTRY GUIDANCE ON COLD WATER IMMERSION IS SUPPORTING THE WET LEISURE SECTOR

THE WET LEISURE INDUSTRY FACES A PIVOTAL MOMENT AS COLD WATER IMMERSION (CWI) GAINS INCREASING POPULARITY, NOT ONLY IN COMMERCIAL (AND SOME BUSINESS) SETTINGS, BUT ALSO IN DOMESTIC SETTINGS.

The rise in popularity of products such as cold tubs, plunge pools, and ice baths has created a pressing need for structured, evidence-based guidance to ensure safety and hygiene, just as the industry has provided guidance

for the hot tub part of the sector. In response, BISHTA (British and Irish Spa and Hot Tub Association) and SPATA (Swimming Pool and Allied Trades Association), backed by an industry-wide working group of members and non-members, have led the development of CWI guidance for the sector, which will evolve over time, as more evidence comes to light.

The working group have provided much-needed clarity for manufacturers, retailers, service providers, and operators, offering practical tools to support the safe and successful implementation of CWI. Retailers and professionals now have a defined framework for educating customers, supporting both new and existing users with confidence and consistency.

This guidance supports best practice aligned with the Health and Safety Executive's HSG 282 and PWTAG (Pool Water Treatment Advisory Group) recommendations for commercial operators, such as gyms, wellness centres, spas, holiday parks, and rehabilitation clinics. It equips businesses to implement CWI effectively, enhancing client safety, wellbeing, and satisfaction.

Although cold water immersion is not new, its growing use in controlled environments, from leisure centres to private homes, brings heightened responsibilities. While hot tubs and warm water immersion benefit from decades of regulatory insight, the cold-water sector has so far lacked the equivalent standards. The new

CWI-Industry Guidance fills this gap, drawing on BISHTA's and SPATA's experience with warm water practices and integrating expert input from PWTAG and other stakeholders. It addresses key CWI-specific issues, including cold shock response, water hygiene at low temperatures, and safe immersion duration.

A significant strength of the guidance is its accessibility across the supply chain. It clearly defines two product categories:

- Cold Water Immersion Baths, which are emptied after each use
- Cold Water Immersion Spas, which retain water over more extended periods

This distinction ensures clarity in applying appropriate water treatment, sanitation, and user protocols.

Water hygiene is a significant focus. The guidance outlines suitable sanitisers (e.g. chlorine or bromine) for lower temperatures, addressing concerns like solubility, pH balance, and compatibility with UV or ozone systems. It promotes reliable testing methods, recommending photometers or comparators over test strips, which can be inaccurate in cold conditions.

While CWI offers a range of benefits - improved circulation, muscle recovery, and mental wellbeing - these are only achievable when risks are well managed. Without proper regulation, users could face dangers such as cold shock, drowning, or complications from pre-existing medical conditions.

To counter these risks, the guidance advises on:

- Pre-screening participants
- Maintaining safe water temperatures
- Supervising use in commercial settings

It recommends immersion durations of under 10 minutes, especially for beginners and even lower bathing durations in water below 10°C, focusing on gradual acclimatisation. The guidance also warns against unsupervised use, especially when

under the influence or when alone. Importantly, it advises that CWI is generally unsuitable for children under 16 unless under medical supervision, due to their immature thermoregulatory systems.

What truly distinguishes this guidance is the collaborative process behind it. BISHTA and SPATA invited contributions from their technical committees, as well as non-member manufacturers and professionals across the UK wet leisure industry, with research-based guidance from Coventry University. The result is a document grounded in practical experience and scientific insight, reflecting the sector's real-world needs and challenges.

Already, this initiative has led to the publication of a dedicated BISHTA consumer factsheet (C43) and supported PWTAG's finalisation of Technical Note 71 on Ice Baths - two valuable tools for the wider community. BISHTA and SPATA have provided their respective members with a factsheet (M1149 and M149, respectively), which is also available free of charge to non-members.

As CWI becomes embedded in modern wellness routines, the industry

must ensure its safe, sustainable, and professional use. The release of this guidance marks a turning point, providing a unified standard for manufacturers, suppliers, and operators. It gives the sector a unique selling point: the language, reassurance, and protocols needed to communicate value and safety to trade and end users alike.

Further industry feedback will continue to shape and refine the guidance, but its current version already sets a new benchmark. It empowers the wet leisure industry to support CWI responsibly, fostering consumer confidence and ensuring the practice thrives smart, safe, and sustainably. Most importantly, to help the industry, BISHTA and SPATA have made this valuable industry guidance available freely on their websites under their Trade resources and information.

Special thanks go to the CWI industry-wide working group, whose shared expertise and collaboration have been vital in developing this essential guidance to strengthen and support the wet leisure sector. A list of contributors can be found on the BISHTA and SPATA websites.
www.bishta.co.uk/www.spata.co.uk





BUCKET LIST GETAWAYS

When planning a getaway, most people choose a location with the intention of exploring the surrounding area. But these bucket list retreats are so extraordinary, they are the destination.

While a pool is always a welcome bonus on any hotel stay, our picks go beyond the ordinary, spotlighting some of the most spectacular swimming facilities out there. We've selected two sensational hotel retreats in London that cater to a range of budgets without compromising on luxury. So don't worry, you won't have to splash the cash to feel like royalty!

These sky-high indoor pools prove that an unforgettable escape doesn't always require a passport. With sweeping, open-plan views of some of London's most iconic and prosperous neighbourhoods, these urban retreats deserve a top spot on your travel bucket list.

ARK CANARY WHARF

If you're looking for a relaxing getaway that doesn't break the bank, we've got you covered! Nestled in the Cross-harbour Plaza, ARK Canary Wharf offers stylish studio rooms and incredible facilities. A different view yet still as beautiful, the hotel overlooks London's River Thames so every stay comes with postcard-perfect vistas of the harbour. With full-length windows framing postcard-worthy views, you can live out your infinity pool dreams right in the heart of London.

Not only does this retreat house an eye-catching pool, but it also offers a sauna, steam room and gym. All the things you need to feel important. This tucked away complex is perfect for those looking for a calmer get away whilst also having the choice to take a short walk into the bustling city. From just £74 per night*, you can indulge in designer comforts, harbour-side views and all the amenities of a boutique spa proving that you truly can do "boujee on a budget." Ready to elevate your next London stay?



*Prices from Expedia.co.uk and based on 2 adults sharing for a one night stay in August 2025.

SHANGRI-LA THE SHARD

Our first must see is located on St Thomas Street in London's most iconic hotel, Shangri-La the Shard. Known for its appealing exterior and 360-degree views capturing the whole of London in its finest form but it gets better inside.

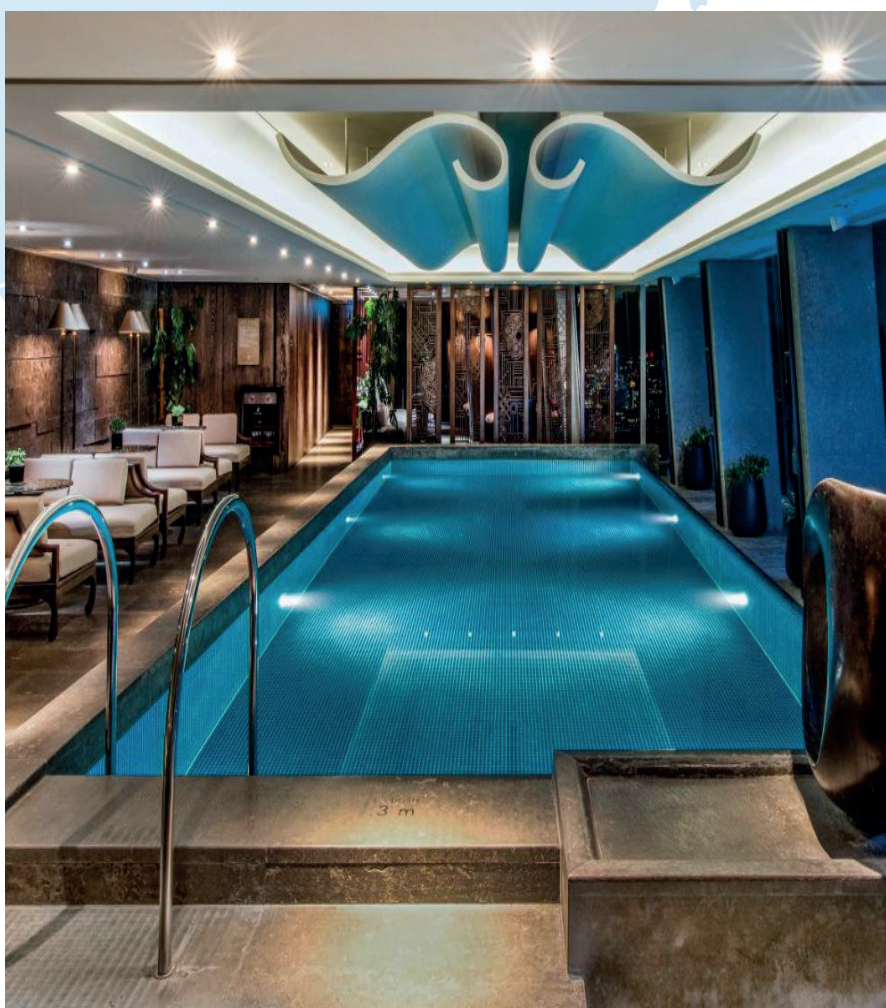
Landing a spot as Western Europe's tallest skyscraper pool, there's no need to sight see when you can overlook some of London's prized possessions whilst submerged in the silky waters. The London Eye, Tower of London, Houses of Parliament, Big Ben and the list goes on, why would you want to be anywhere else in the world?

Begin your morning with a tranquil dip, then drift into the adjoining spa suites for an aromatherapy massage tailored to melt away city stress.

If you're in for a good time, we've also got you covered! While this pool may be a place to relax and unwind in the day, by night it's a place to party soon becoming one of London's most prestigious cocktail bar tickets. The pool deck becomes GONG Bar, where expert mixologists craft signature cocktails named after London icons. Sip your drink under the stars, city lights sparkling around you, and discover why night swims at Shangri-La are rapidly becoming the capital's most coveted after-dark ritual.

This being the more expensive retreat, allows guests to book a room with access to facilities from £596 per night* – a premium that unlocks exclusive privileges, private check-in and round-the-clock concierge. Whether marking a special anniversary, sealing a business triumph or simply checking off your London bucket list, Shangri-La the Shard delivers an experience that transcends mere luxury.

*Prices from Expedia.co.uk and based on 2 adults sharing for a one night stay in October 2025.



UK POOL AND HOT TUB INDUSTRY EMBRACES EQUALITY, DIVERSITY, AND INCLUSION WITH NEW TRAINING PROGRAMME



EDI Pilot Training course attendees with EDI expert Refeia Zaman (centre).

The UK pool and hot tub industry, recognised for its role in promoting health, fitness, wellness, recreation, and relaxation, is taking a major step forward to improve inclusivity and equity.

BISHTA (British and Irish Spa and Hot Tub Association) and SPATA (Swimming Pool and Allied Trades Association) have launched a pioneering Equality, Diversity, and Inclusion (EDI) Training Programme, specifically designed for the Wet Leisure Industry, and initiated by the EDI working group set up by the trade associations in 2024 to identify practical ways to support greater equality, diversity, and inclusion across the sector, ensuring the industry evolves to better reflect and serve the diverse communities it engages with.

Developed in collaboration with EDI expert Refeia Zaman and shaped by valuable feedback from industry stakeholders, the programme aims to embed inclusive practices throughout the sector. Following a successful pilot workshop, the initiative is now ready for broader rollout across the UK.

WHY THIS MATTERS:

- Inclusive businesses attract and retain top talent.
- Diverse teams stimulate innovation and drive growth.
- Customers prefer businesses that reflect their values.
- Promoting inclusivity is the right thing to do.

THE INDUSTRY'S SUPPORT WILL:

- Fund the development and delivery of tailored EDI workshops.
- Provide subsidised access for small and medium-sized enterprises.
- Encourage inclusive leadership throughout the wet leisure sector.
- Position the industry as a leader in equality and wellbeing at a national level.

To support the expansion of the EDI Training Programme, EDI Working Group member Dash Ganeson proposed launching a GoFundMe campaign by BISHTA and SPATA, with the support of Pool Industry Promotions (PIP), to secure essential funding. The fundraising campaign is now live, with sincere thanks extended to Dash Ganeson and Patrick Thorpe for their generous contributions, which have helped to kickstart this important initiative.

All contributions will help subsidise training for smaller businesses, ensuring that access to inclusive education is not restricted by company size or resources. This industry-wide initiative aims to embed consistent, inclusive practices across the wet leisure sector, fostering a more welcoming, resilient, and progressive environment. Donations will play a vital role in building a more diverse and respectful industry that benefits businesses, employees, and customers alike.

Support from across the sector – including manufacturers, pool and spa installers, retailers, suppliers, and advocates for inclusive workplaces – will be key to driving lasting and meaningful change.

Chris Hayes, Managing Director of SPATA and BISHTA, said: ***“Every contribution, no matter the size, plays a crucial role in building a more inclusive, respectful, and welcoming industry for all.”***

Sallie Leslie-Golding, PR & Marketing Manager for Pool Industry Promotions, adds: ***“This is a unique opportunity for the industry to come together and demonstrate true leadership on inclusivity. Supporting this Equality, Diversity, and Inclusion (EDI) training initiative is not about ticking a box – it is about creating a better, stronger future for everyone involved in wet leisure.”***

A CALL TO ACTION:

Businesses are encouraged to donate a minimum of £25 – or more if able – to help reach funding goals and bring about lasting change. Each donation takes the industry one step closer to an inclusive future.

If you would like to support this initiative, you can book a place on a course by contacting the BISHTA/ SPATA office via admin@bishta.co.uk or admin@spata.co.uk.

To learn more about the initiative or to contribute, please visit www.spata.co.uk / www.bishta.co.uk, where you will find the GoFundMe link on the homepage, or scan the QR code



SPRING UPDATE FROM CHRIS HAYES: A BUSY START TO 2025!

CHRIS HAYES, BSPF MANAGING DIRECTOR, SHARES PLANS FOR A BUSY YEAR!

The BSPF continues to work with two prominent international bodies: the World Alliance of Pool and Spa Associations (WAPSA) and the European Union of Swimming Pool and Spa Associations (EUSA). These partnerships reflect the BSPF's dedication to supporting innovation, sharing expertise, and promoting excellence across the UK's wet leisure industry. By engaging with these global networks, the BSPF aims to equip its members with the tools and insights to stay ahead in a dynamic and competitive landscape.

For BISHTA and SPATA members, this translates into enhanced training opportunities, advocacy initiatives that reflect global best practices, and access to the latest industry insights. These resources empower businesses to implement safety, sustainability, and design innovations while meeting regulatory requirements and customer expectations. BISHTA and SPATA offer a comprehensive library of resources available around the clock through their exclusive online Members' Hubs to further support their members. These resources include industry standards, supplements, factsheets and supporting documents, providing convenient, on-demand access to essential information that helps members excel.

The BSPF's dedication to advancing safety and environmental standards ensures that SPATA and BISHTA maintain leadership positions in the wet leisure industry. By promoting best practices and fostering innovation in product development and service delivery, the trade associations enable members to respond effectively to the evolving demands of customers and regulators. This focus on excellence

positions members to stay competitive in today's market while laying the foundation for future success. Whether through cutting-edge technology or improving operational practices, members are equipped with the tools to drive growth and maintain high quality and safety standards.

One of the key advantages of the BSPF's collaboration with WAPSA and EUSA is its ability to amplify the UK industry's voice on the global stage. This advocacy strengthens the UK's influence in the industry and helps align domestic practices with global trends, further enhancing the competitiveness of UK businesses. Leveraging WAPSA's worldwide perspective and EUSA's European expertise, the BSPF bridges the gap between international innovation and local implementation. This collaborative approach fosters the development of products and services that cater to customer demands while staying ahead of industry shifts, giving UK businesses a significant competitive advantage.

This year, 2025 British Pool and Hot Tub Award winners will have an opportunity to be short-listed for the 2025 EUSA Awards, with the winners to be announced at Piscina & Wellness in Barcelona (this coming November).

Since its establishment in 1999, the BSPF has been a driving force behind the UK Wet Leisure Industry's growth, sustainability, and excellence. By fostering partnerships with leading organisations, the BSPF advances safety, quality, and innovation within the pool and spa sector. Through close collaboration with esteemed bodies such as the Institute of Swimming Pool Engineers (ISPE), the Pool Water Treatment Advisory Group (PWTAG), the Royal Society for the Prevention of Accidents (RoSPA), and the Swimming Teachers' Association (STA), the BSPF is committed to promoting best practice and elevating industry standards.



ISPE: Continuing its invaluable work on workforce qualifications, ISPE remains a cornerstone of professional development within the industry. The ISPE is now under the leadership of Luke Griffiths (as General Manager) and Bob Judd (as President). At the 2024 seminar in October near Newbury, SPATEX showed its support by exhibiting and contributing towards the attendance of the new students who were picking up their certificates and/or awards. There was also the opportunity to recognise the students who achieved excellence by re-presenting the ISPE 2024 awards as an integral part of the Industry Gala Evening held on Tuesday, 4th February 2025, at SPATEX.

PWTAG: SPATA collaborates closely with PWTAG (Pool Water Treatment Advisory Group) to ensure the highest standards in pool and spa water quality, maintenance and guidance. There are opportunities for SPATA to provide feedback on industry guidance, through the Swimming Pool Water Book (The 'Blue Book'), other publications, and the Code of Practice. Working with PWTAG involves aligning industry practices with PWTAG's guidelines, ensuring that pool and spa facilities and members' working practices meet rigorous hygiene and safe operation standards. This collective effort helps safeguard public health and promote professionalism across the sector.

ROSPA: In collaboration with organisations such as the Royal Society for the Prevention of Accidents (RoSPA), the BSPF is a member of the National Water Safety Forum (NWSF). The NWSF works collaboratively with various organisations to create a safer environment in and around water, offering practical guidance and raising public awareness about water safety. The BSPF actively contributes to nationwide initiatives to reduce water-related accidents and promote safe swimming practices, along with supporting RoSPA's promotional messages and campaigns.

STA: SPATA and BISHTA have been working with the Swimming Teachers Association (STA) (BSPF members) on exciting initiatives that are driving innovation. SPATA is involved in encouraging more swim school operations, while BISHTA has developed a useful course based around site surveys. The swim school initiative is a key focus at the 2025 SPATEX workshops, which feature tailored sessions for swim school owners and pool contractors.

Research Partnerships: Recognising the well-established health and wellbeing

benefits of warm water immersion, BISHTA and SPATA are also investigating the potential advantages of cold water immersion while advancing working with partners to establish research and development to substantiate the benefits of warm (and cold) water immersion further.

Collaborations with Coventry University and the University of Portsmouth aim to provide groundbreaking research on the specific benefits of water leisure products. We will share updates on these projects as they progress.

BISHTA has spearheaded an industry subgroup focused on producing comprehensive guidance on cold-water immersion. During 2024, the subgroup worked on producing industry guidance for cold-water immersion products. This eagerly anticipated document will be released in early 2025 and will provide valuable insights for professionals and consumers. This effort is complemented by consumer-friendly cold-water immersion factsheets on the BISHTA website.

The BSPF, alongside its members SPATA and BISHTA, is dedicated to advancing Equality, Diversity, and

Inclusion (EDI) within the wet leisure sector. In 2024, they established a dedicated EDI working group comprising industry professionals to identify challenges and opportunities, develop best practices, and foster an inclusive culture encouraging innovation and growth. This group has been instrumental in creating the BSPF EDI policy, adopted by SPATA and BISHTA, and launching a pilot EDI training course in August 2025 to provide practical insights for workplace implementation. The working group is producing an EDI Training – Funding Proposal to share with the Industry in early 2025. Through these initiatives, the BSPF and its associations strive to ensure fair representation, address barriers to inclusion, and celebrate the diverse backgrounds that contribute to the industry's strength.

The BSPF is committed to driving innovation, education, and safety within the UK pool, spa, hot tub and wellness industry. These partnerships and joint initiatives underscore the Federation's mission to elevate standards and support the industry's growth.

VISIT OUR STOCK CLEARANCE SALE TAB ON THE CERTIKIN WEBSITE
**FOR SOME INCREDIBLE SAVINGS ON
 A WIDE RANGE OF STOCK ITEMS**

It's your chance to grab high quality products at unbeatable prices, but hurry – once they're gone, they're gone.

Find out more by scanning the QR code or visiting www.certikin.co.uk



**CLEARANCE
 SALE**

EUSA AWARDS

UK EXCELLENCE RECOGNISED SPATA AND BISHTA REVEAL THE SHORTLIST ENTRIES FOR 2025 EUROPEAN POOL & SPA AWARDS

The European Pool and Spa Awards, hosted annually by the European Union of Swimming Pool and Spa Associations (EUSA), celebrate the very best in domestic pools, spas, and hot tubs across Europe. Now in its thirteenth year, the 2025 edition of these prestigious awards will culminate in a grand ceremony on Wednesday, November 19, at Piscina Barcelona - pool, wellness, and outdoor exhibition.

Representing the UK, SPATA (Swimming Pool and Allied Trades Association) and BISHTA (British and Irish Spa and Hot Tub Association) have proudly submitted entries from the winners of the 2025 British Pool & Hot Tub Awards. Being shortlisted for the EUSA Awards is a significant achievement, offering companies exceptional PR exposure, enhanced credibility, and a competitive edge in the Wet Leisure Sector. This opportunity also showcases the outstanding standards and quality of work produced by members of the UK trade associations.

The EUSA Awards are open to all national associations that are members of EUSA, with each association submitting entries on behalf of their member companies. All entries must comply with relevant European and national standards. Entries are judged anonymously by a panel of experts



LAGOON POOLS CONSTRUCTION – Domestic Outdoor Pools (DOP)

from each member country, who evaluate each submission based on visual impact, innovation, and aesthetic appeal. Judges aim to award Gold, Silver, and Bronze in each of the eleven categories, ensuring a fair and competitive process.

For more information about EUSA and the European Pool and Spa Awards, visit: www.eusaswim.eu

SHORTLISTED BRITISH ENTRIES 2025

1. Domestic Outdoor Pools (DOP)

- 1 Lagoon Pools Construction
- 2 Mermaid Pools
- 3 XL Pools
- 4 Cresta Leisure
- 5 Albatross Pools & Spas

2. Domestic Indoor Pools (DIP)

- 6 Origin Leisure
- 7 Whitewaters
- 8 Tanby Pools
- 9 Centurion Leisure
- 10 CB Pools

3. Domestic Spas (DS) SPATA

- 11 Cresta Leisure
- 12 XL Pools
- 13 Centurion Leisure
- 14 Tanby Pools
- 15 Whitewaters

4. Domestic Hot Tubs (DHT) BISHTA

- 13 Concept Spa

- 14 1 Stop Spas

- 15 USSPA

- 16 USSPA

- 17 SpaFlo

5. Domestic Pools with an Enclosure (DWE)

- 18 Centurion Leisure

- 19 Centurion Leisure

- 20 Alukov UK

6. Domestic Pools with a Cover (DWC)

- 21 Lagoon Pools Construction

- 22 A19 Pools & Spas

- 23 Tanby Pools

- 24 XL Pools

7. Pools by Night (PBN)

- 25 Centurion Leisure

8. Renovation - Before / After (REN)

- 26 A19 Pools & Spas

- 27 Mermaid Pools

- 28 Tanby Pools

- 29 Centurion Leisure

- 30 Cresta Leisure

9. Pools in Touristic Establishments

- 31 Cresta Leisure

- 32 Cresta Leisure

10. Wellness Pools (WES)

- 33 Origin Leisure

11. Swimming Pools Outside Europe

- 34 Exterior Experience Landscaping

- 35 Exterior Experience Landscaping

- 36 NIVEKO



NIVEKO – Swimming Pools Outside Europe



Upcoming Events

ISPE 134th One-Day Seminar

ORIDA Hotels Newbury M4, Junction 13,
Oxford Road, Newbury, RG20 8XY
09 OCT 2025

ISPE Filtration Workshop

Plastica, Perimeter House, Napier Road, St
Leonards on Sea, TN38 9NY
04 NOV 2025

ISPE 135th One-Day Seminar

Black Country & Marches Institute of
Technology, Zoological Way, Dudley, DY2 8PJ
27 NOV 2025

ISPE 136th One-Day Seminar

ORIDA Hotels Newbury M4, Junction 13,
Oxford Road, Newbury, RG20 8XY
05 MAR 2026



W: www.ispe.co.uk

T: 0331 630 3301

E: info@ispe.co.uk



THE IMPORTANCE OF TRAINING AND CONTINUOUS PROFESSIONAL DEVELOPMENT IN SWIMMING POOL ENGINEERING

BY LUKE GRIFFITHS, ISPE GENERAL MANAGER

In the ever-evolving swimming pool industry, keeping up with new technologies, regulations, and best practices is essential. Whether you're new to the profession or an experienced pool engineer, training and continuous professional development (CPD) are key to ensuring safe, efficient, and compliant pool operations.

The Institute of Swimming Pool Engineers (ISPE) is dedicated to raising standards across the industry by offering a range of educational and practical training opportunities. At the core of ISPE's educational pathway is the ISPE Study Course, designed to provide aspiring pool technicians and engineers with a comprehensive foundation in four key subject areas: Swimming Pool Construction, Filtration, Chemicals, and Heating. The flexibility of the course allows students to learn at their own pace, making it ideal for both newcomers and those already working in the industry.

A unique advantage of completing the course is that successful students are eligible to join ISPE as Technician Members and use the designatory letters TnISPE (Cert.) after their name – a clear recognition of their professional achievement and technical competence within the industry.

However, training doesn't stop with initial qualification. ISPE is committed to supporting ongoing learning through a series of one-day seminars held throughout the year. These seminars are open to both members and non-members and are designed to keep professionals informed about the latest industry developments. With a lineup of respected guest speakers, these events offer valuable insights into current trends, innovations, and regulatory updates. They also provide excellent networking opportunities, with dedicated space for companies to exhibit their products and services. Attendees can connect with suppliers, manufacturers, and fellow professionals – all in one place.

In addition to seminars, ISPE runs a practical Filtration Workshop, aimed

at giving hands-on experience to new recruits and service personnel. In pool engineering, practical skills are just as important as theoretical knowledge. This workshop is specifically designed to reinforce learning by allowing participants to engage directly with filtration equipment, helping to build confidence and competence in real-world scenarios.

In summary, ISPE plays a vital role in advancing training and professional development across the pool industry. Through its Study Course, one-day seminars, and practical workshops, the Institute ensures that both new and experienced engineers are equipped with the knowledge and skills needed to maintain the highest standards in pool construction and maintenance.



MEET OUR TEAM

At Certikin, we know that it's not just our products that make us stand out – it's the people. There is a friendly, knowledgeable team working hard to make sure our customers get exactly what they need. Our Sales Executives aren't just here to sell – they're here to listen, advise,

and support our customers. Whether it's helping a pool builder source the latest equipment, guiding a new business through their first order, or simply being on hand with expert advice, our team is all about building real connections and lasting relationships.

CERTIKIN'S SALES EXECUTIVES



ROB RENTON

I am Certikin's Heating & Ventilation Field Sales Manager providing technical, product, sales and on site customer support for the Dantherm & Calorex brand of dehumidifiers, swimming pool heat pumps and ventilation products, along with Global Energy Systems high temperature heat pumps and plunge pool chillers.

I am an experienced HVAC surveyor including energy assessments of swimming pools. My career started with 10 years working in commercial HVAC industry, supporting ventilation, heat recovery & refrigeration technologies and subsequently over 25 year's experience in commercial & domestic HVAC in the wet leisure industry. My extensive experience enables me to support our pool trade customers with solutions for HVAC equipment and I'm always happy to meet our customers either on site or at their place of work to discuss solutions.



RICHARD WAY

I joined the pool industry back in September 1984 and have been in a variety of job rolls. I was Sales Manager for a few years and then appointed to Sales Director back in 2004. I thoroughly enjoyed the challenges that this created and can honestly say I have worked with so many

capable and talented people over the years that has made the Company that Certikin is today as the market leader in the Wet leisure Industry.

From the start of 2024 I reduced my hours down to 4 days per week and am enjoying my new role as Sales Executive for the South East. I have always loved working with our customers and am now able to spend more time visiting them and talking to them on the phone in order to help support them or help them grow their businesses.

Should any customer require a visit or meeting please give me a call.



MARK ROWLANDS

I've been proud to be part of the Certikin team since I joined back in 2001, giving me over two decades experience in the industry.

From 2001 to 2015, I worked as a Technical Sales Advisor, spending much of that time as CertiChem Sales Manager, where I specialised in water treatment. It was nine years ago that I moved into my current role as Area Sales Executive.

My role allows me to work closely with customers across the region, offering face-to-face support as well as being able to discuss any aspects of our products & services, and to update on our new products and developments. I do value the opportunity to meet with customers – whether onsite, over the phone, or wherever is most convenient – to ensure we deliver the high standard of service and bring Certikin's personal touch to our valued customer base.

Customer feedback is something we genuinely welcome, and I'm always grateful for the time and insight our customers share with us. If you'd like to arrange a meeting or simply have a chat, feel free to get in touch by phone or email – I'd be delighted to hear from you.



DAVE BRETHERTON

I joined Certikin just two months ago, but have worked in the pool industry for four and a half years.

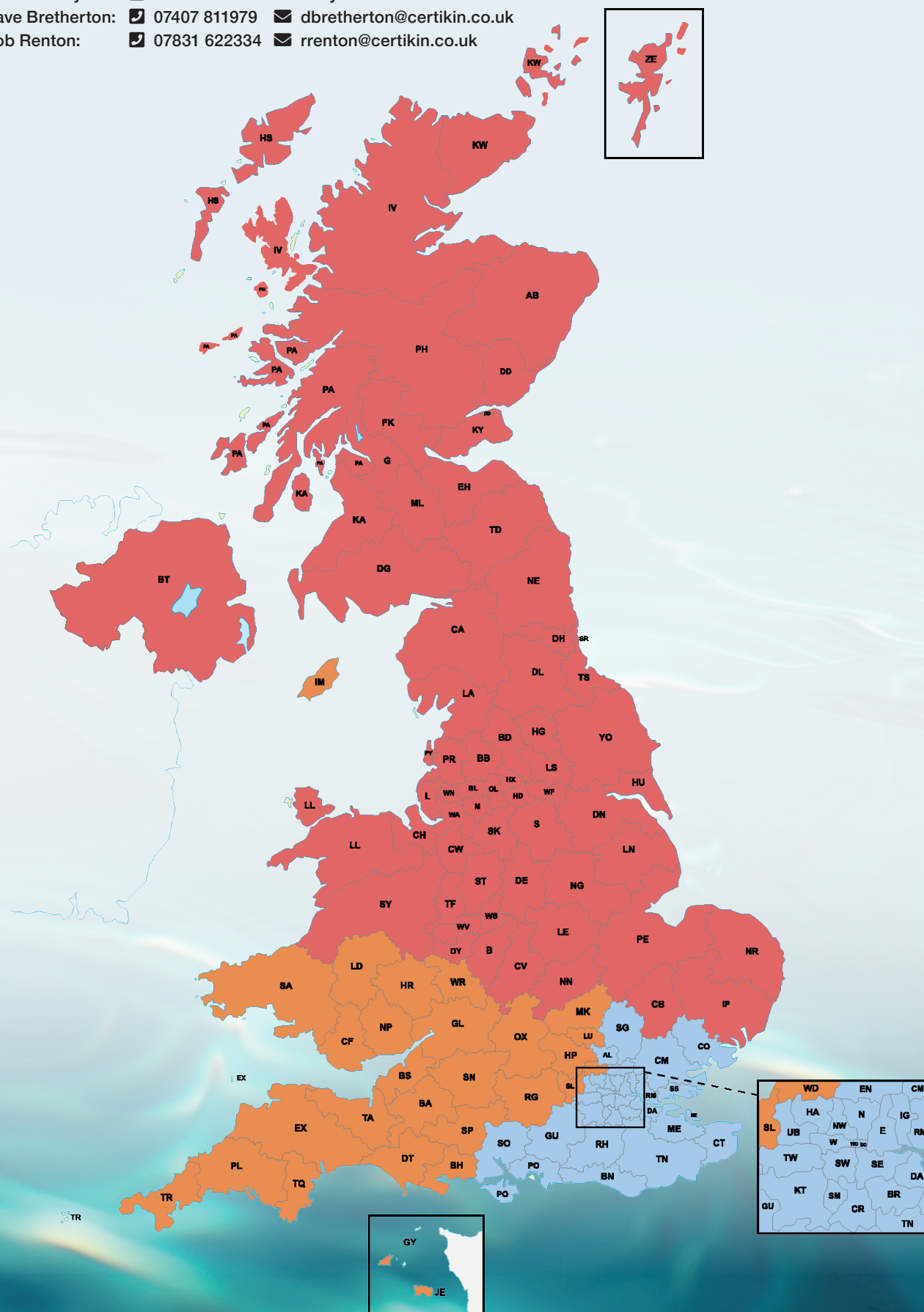
In that time I have forged some strong relationships within the industry and have a sound level of technical knowledge across many products. I am proud to also be representing Certikin on the SPATA technical committee.

Whilst I am still relatively new to my sales executive role, I have started to make contact with a number of my customers and will endeavour to get around to visiting them all in the coming months. I am very much looking forward to supporting them with their future pool builds and servicing.

TO FIND OUT MORE ABOUT THE BENEFITS OF WORKING AT CERTIKIN AS WELL AS OUR LATEST VACANCIES, VISIT WWW.CERTIKINCAREERS.CO.UK

SALES EXECUTIVE TERRITORIES

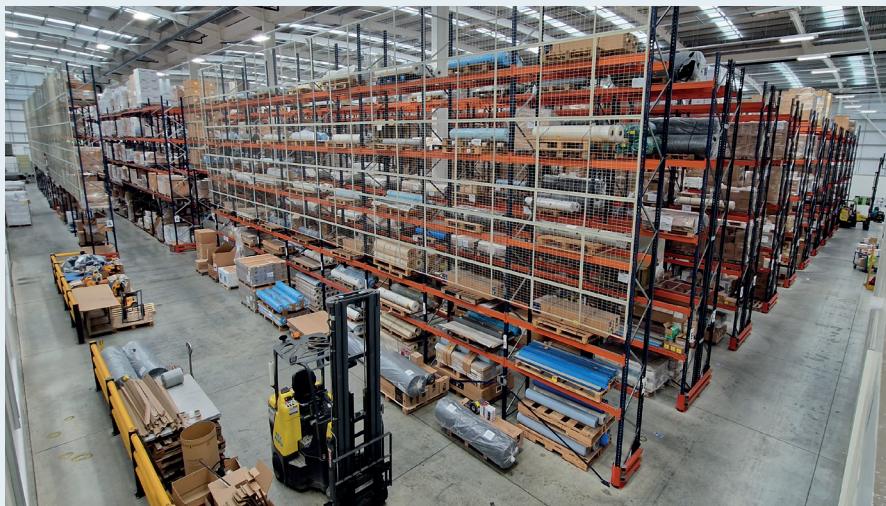
- Mark Rowlands: 📞 07879 697734 ✉️ mrowlands@certikin.co.uk
- Richard Way: 📞 07831 622347 ✉️ rway@certikin.co.uk
- Dave Bretherton: 📞 07407 811979 ✉️ dbretherton@certikin.co.uk
- Rob Renton: 📞 07831 622334 ✉️ rrenton@certikin.co.uk



THE ENGINE ROOM BEHIND THE UK'S LEADING SUPPLIER

At the heart of Tungsten Park, Witney, our 125,000 sq. ft. facility is more than just a base for our central teams – including sales, customer service, and accounts. It's also home to the UK's largest stock of water leisure equipment. With over 9,500 product lines spanning domestic and commercial pools, wellness, spas, saunas, aquatics, and both new build and retrofit markets, our vast warehouse ensures we meet every need. Behind the scenes, our dedicated warehouse team works tirelessly to keep everything running seamlessly, so customers receive their orders exactly when they need them.

- Team of 27 people which cover a variety of roles including admin and drivers as well as the people who pack and pick each order
- Our picking team are certainly kept fit with each of them on average covering between 15,000 and 20,000 steps per day
- For the movement of larger products, the staff make use of the state-of-the-art machinery available which includes six powered pallet trucks, five pivot forklifts and two counterbalance forklifts
- The average number of parcels/packages dispatched each day from Certikin on an overnight delivery is 168



- The average number of pallets dispatched each day from Certikin on an overnight delivery is 51
- To maintain our large stock holding we receive deliveries from across the world daily with the team unloading on average four artic lorries of products each day
- As well as working with various couriers, we have three of our own lorries making daily deliveries to our customers
- Next day delivery is available for orders placed Monday to Friday with us having a cut off time of 3pm for parcels and 1:30pm for pallet deliveries
- The team also includes our Returns Team who work closely with Customer Services to ensure any returns are processed promptly as well as dealing with any products that may need repair

WE'RE A SOCIAL BUNCH AT CERTIKIN

and you'll find a wealth of information on our social media channels.

Like,
Share,
Comment
@CertikinUK



Connect
to our
network
@CertikinUK



See the complete
picture
@CertikinUK



Watch
online
anytime
@certikinofficial



OUTSTANDING EMPLOYEE



SPRING 2025!

of the SEASON

Congratulations to Toby Hopkins who is the latest recipient of our Employee of the Season award.

Toby is part of our busy warehouse team and feedback from his colleagues commented how he accepts any challenges given to him with maturity and confidence and is a pleasure to work with. He has also completed supervisor cover at short notice and comes into work most days at 7am and is often the last to leave. He never complains and has been described as a happy soul.

WELL DONE TOBY, A WELL-DESERVED WINNER!



LONG SERVICE AWARD

At Certikin we believe in recognising and celebrating the incredible efforts of our team members. That's why we introduced our Long Service Awards.

Recently the team got together to celebrate another colleague completing an incredible 25 years of service with Certikin.

This time congratulations go to Nicola Bryant from our Customer Services Team on reaching this impressive milestone. Nicola was presented with a personalised gift by Neil Stephenson, Managing Director as a way of showing the company's gratitude for her many years of loyal service.

CONGRATULATIONS NICOLA!

WHY WAIT FOR THE POSTMAN?

PRICE LISTS AND BROCHURES ARE AVAILABLE TO VIEW ONLINE

View digital versions of our price lists plus copies of our latest product brochures by visiting www.certikin.co.uk. As well as being able to view the brochures online, there is also the option to download a PDF copy for offline use.



INTRODUCING BERMUDA

FOR ALL YOUR POND AND WATER GARDENING NEEDS



www.bermudawatergardens.com

IN 2023, CERTIKIN MADE A MAJOR MOVE IN THE WATER GARDENING AND POND EQUIPMENT INDUSTRY BY ACQUIRING THE RENOWNED BERMUDA BRAND FROM EVOLUTION AQUA.

This acquisition followed five successful years of collaboration between the two companies, a partnership that helped Bermuda—originally launched in 1998—make a triumphant return to the UK market.

Previously, Evolution Aqua handled Bermuda's sales and marketing operations while Certikin oversaw logistics and accounting. With this acquisition, Certikin now manages all aspects of the brand, bringing the entire operation under one roof.

The Bermuda line now complements Certikin's existing product portfolio, which includes well-established names like Heissner and AquaForte. Together, these ranges create one of the most comprehensive selections of water gardening and aquatic products available for this unique and exciting market.

Backed by a knowledgeable team both in-office and on the road, we can offer unparalleled support to retailers—

providing guidance on stock selection and profitable promotional solutions.

Looking ahead, Bermuda remains committed to driving innovation across every facet of water gardening—from sourcing cutting-edge products to delivering standout retail campaigns. Supported by Certikin's expertise and infrastructure, Bermuda is poised to remain at the forefront for years to come.





POND PUMPS:

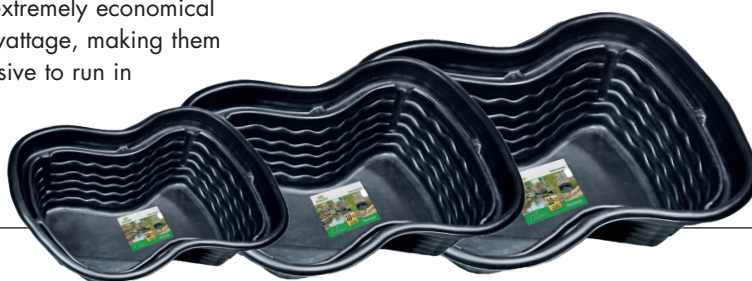
Bermuda pond pumps are designed and packaged to sell in volume. They come complete with an array of superb accessories and fittings; they are incredibly reliable, durable and built to last for many years.

All of the fountain and filter pumps come with a full three-year guarantee along with 10 metres of outdoor cable. They are also extremely economical with very low wattage, making them the least expensive to run in the industry.

PRE-FORMED PONDS AND POND LINERS:

All ponds are made from high density polyethylene for maximum durability and come with a 20-year warranty.

All pre-cut liners offer a 20-year warranty, they come in a large range of available sizes, they can also come if preferred in roll lengths of up to 100 metres long.



WATERCOURSES:

Bermuda has the best-selling and most authentically sculptured range, giving the most realistic effect possible.

Each watercourse comes complete with an integral stepped hose tail and a discrete water entry point at the back, enabling the most natural appearance.

FILTRATION:

Bermuda offers a complete range of superbly efficient biological filters be it gravity fed style or pressure, along with ultraviolet clarifiers, that can come integral with the filter unit or as an inline separate addition.

POND FISH HEALTH:

The Bermuda pond treatments have established themselves as a major force in the industry. The range is very effective and completely safe for pets and wildlife. All varieties come in three sizes 250ml 500ml and 1 litre and are supplied in handy easy dose bottles.

POND CLEANING:

Bermuda offer the full range of cleaning products, from pond vacuums to blanketweed brushes and pond gloves.

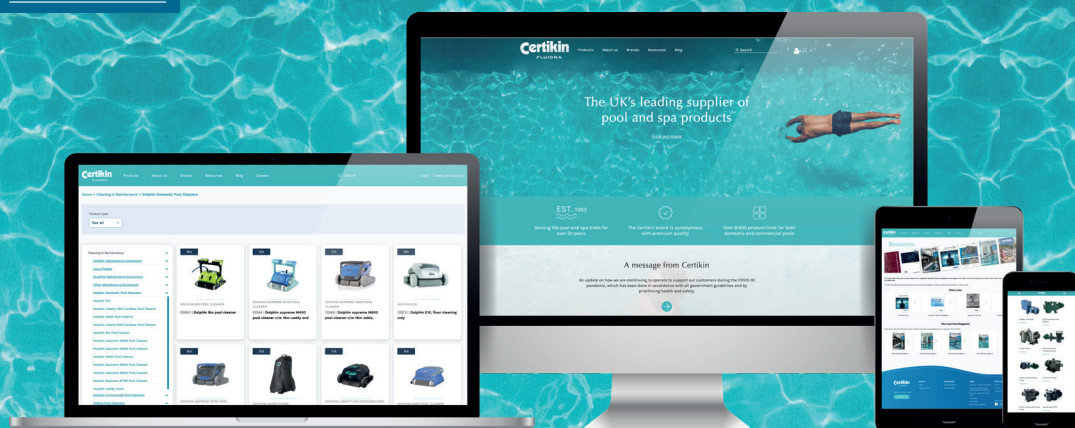
SOLAR PUMPS AND WATER FEATURES:

Bermuda offers a full range of solar pumps with back up batteries, plus many stunning water features, both solar and mains operated.

The Bermuda brand carries the most comprehensive range of additional products such as pond baskets, compost, poolside ornaments, fish nets, to name a few, in short Bermuda will help you grow your water gardening offering for many years to come!

The Bermuda Team

Michael Coyle (17 years with Certikin) **Bob Meacham** (27 years with Bermuda) and **Adam James** (18 years with Bermuda) are always happy to talk and can be contacted on 01993 777200 or info@bermudawatergardens.com.



BIG SAVINGS AVAILABLE WHEN ORDERING ONLINE WITH CERTIKIN

The Certikin website has been designed with you, the customer, in mind. Whether it be ordering from our full range of products and spares, downloading technical information, or just reviewing past orders or invoices, you can do all of this and more.

ORDER ONLINE & SAVE!

To make things even easier, we have **introduced a new, simple and transparent carriage pricing structure**. Not only does this mean you will know the exact cost of your full order at the time of ordering*, but you will also benefit from **lower carriage prices** than if you were to place your order via phone or email.

OUR SIMPLIFIED LOW PRICING STARTS FROM JUST £6.95 WITH FREE DELIVERY AVAILABLE FOR ORDERS OVER £500. THESE SUPER BENEFICIAL CHARGES ARE STRICTLY ONLY APPLICABLE TO ORDERS PLACED VIA THE CERTIKIN WEBSITE.

With a fully mobile-responsive design, you can manage your account and place orders seamlessly from your smartphone or device, even when you're on the go. And while our Sales Order Processing Team is still available by phone or email, using the website is quicker, easier, and more cost-effective.

Certikin International Limited terms and conditions for the supply of goods and/or services apply, as updated from time to time, which are available on our website

Carriage charge is calculated on the nett order value before VAT. The discounted carriage charges detailed above are for orders placed via the Certikin website and are not applicable for orders placed by telephone or email. For these orders, our usual carriage charges will apply, see www.certikin.co.uk/en_gb/delivery-policy/. Our website carriage charges are based on delivery to a single UK mainland address. For deliveries offshore (Northern Ireland, Isle of Man and Channel Islands) a surcharge may apply, details of which will be confirmed by our team once your order has been placed. Please note that Certikin are unable to ship goods direct to Southern Ireland for UK registered accounts. Should you have customers in this country, goods will need to be delivered to your UK account address for you to then arrange the forwarding of these goods at your own expense. If you require a specific delivery date, please state this in the comments when ordering. We will endeavour to deliver on your preferred date. However, this cannot be guaranteed due to factors beyond our reasonable control. If a date is not selected, your order will be dispatched via the most efficient method (not next day carrier). The delivery charges above apply to standard delivery services only. If you require a timed delivery, a surcharge will apply. If a delivery cannot take place due to nobody being available to sign for the goods, redelivery charges may apply. All deliveries are curb side delivery only. For orders including hazardous chemicals a charge of £13.50 will be added by our team once your order has been placed. Consignments that include hazardous goods might be split by the carrier and as a result cannot be guaranteed for next day delivery. Whilst Certikin will endeavour to do its utmost to secure the delivery of goods at the required time the company cannot be held responsible for the performance of the carrier. Where possible we advise that the delivery of goods is secured prior to the commencement of work on site.

*Please note that there are some exceptions and for these products the carriage cost will need to be calculated by one of our team. You will be notified of this before you complete your order, and the carriage will be shown on your order confirmation which you will receive shortly after your order has been placed.

Order by SKU

With this new carriage pricing model, each individual order placed online will be subject to the relevant delivery charge. Therefore, for maximum savings we recommend consolidating small orders into one large order. To assist with this, you can use the 'order by SKU' functionality which is found in the My Account area.

This works like a shopping list and means you can build your order over time, and then when you are ready to place your order, you can send all the items to your basket with one click.

This tool is also a great way to place one off orders, as you don't need to browse the catalogue - simply add the product code or name together with the quantity. If you have several items list the SKU and quantities in an Excel file and this can then be easily uploaded with a simple click.

My Invoices & My Orders

From the My Account area, you can also view and download all of your orders and invoices that you have placed with Certikin. Even if you have not placed them via the website, you will still find all your orders including those placed by phone or email in this one convenient place.

Knowledge at your fingertips

Need a brochure or manual? Then make sure our website is your first point of call where you will find all a wealth of information including brochures, manuals, and installation guides.

Support with getting started

If you have not yet registered for an online account or if you have one but are unsure how to access or make the most of the features above, please do not hesitate to get in touch with our Marketing Team via the usual number or email us at marketing@certikin.co.uk, and we will give you a personal one to one tutorial!



BOOST YOUR BUSINESS WITH CERTIKIN'S FREE MARKETING INITIATIVE

This is a fantastic FREE marketing service that is too good to miss...

...and there's no catches! Are you currently working on, or have you recently completed, a stand-out installation? Then, Certikin should be your first port of call.

Where a project is a fine example of your company's expert craftsmanship, and features Certikin equipment, it makes sense that we join forces and do some joint promotion.

What's involved? From your point of view, very little. Simply email Certikin's Marketing Manager, Chris Green (cgreen@certikin.co.uk) with:

1. Details of location
2. Certikin equipment used
3. Date of completion
4. Where possible, but not essential, some images (it doesn't matter if they are low resolution at this stage)

We look forward to hearing from you.

*Subject to available space in the magazine.

THE/COOL/POOL

Spectacular Pools / "Quality needs no introduction, it speaks for itself..."

"Quality needs no introduction, it speaks for itself..."

100

...says Steve Preece of Warwickshire-based Preece Pools. A long-term customer of Certikin and a fan of the one-stop shop approach to buying, he's a great believer that you get what you pay for. Nestled in the rolling Warwickshire countryside, this beautiful pool is a fine illustration of why Certikin is the company's supplier of choice.

30 OCT



The house renovation and extension complete, the owner turned his attention to landscaping the sprawling garden. An old swimming pool had been filled in some 15 years ago but the house's new owner wanted to start afresh with a new location for a new pool.

Calling on the services of local pool installer, Preece Pools, a new site was carefully marked out but, as the plans were drawn up, the owner had a change of heart. The pool was to be a different shape and size. The pool had to be a different shape and size. The pool had to be a different shape and size.

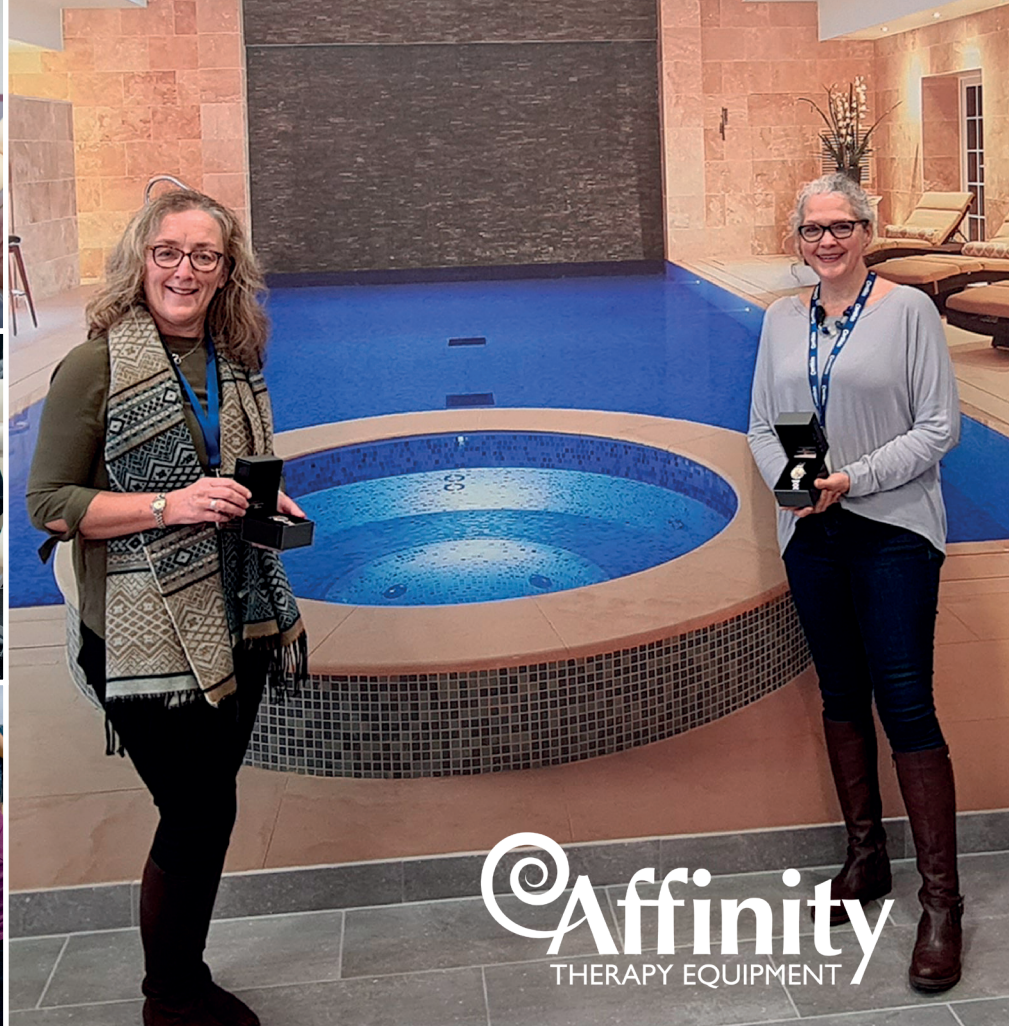
THE/COOL/POOL

A blog powered by

Certikin
FLUIDRA

The rest is up to us. If we select it as one of our chosen case studies (and subject to the owner's permission), we will organise our in-house photographer to visit and arrange for photos to be taken and a case study written. All will be sent to you for your approval. The whole service, from start to finish, is **FREE OF CHARGE**.

The case study will appear in **Cool Pool***, and offered to the industry trade magazines, such as **Swimming Pool News** and **Swimming Pool Scene**, for editorial use. We can even produce a glossy point of sale flyer and provide you with a set of photos for your own use.



Affinity
THERAPY EQUIPMENT

INTRODUCING AFFINITY – CERTIKIN'S VERY OWN BRAND OF PROFESSIONAL MASSAGE THERAPY EQUIPMENT

DID YOU KNOW THAT CERTIKIN FIRST DELVED (OR DIVED IF YOU LIKE A PUN!) INTO THE MASSAGE THERAPY SECTOR SOME 25 YEARS AGO, BACK IN THE YEAR 2000?

Driven by our passion for product development, innovation and excellent construction, it soon became apparent that to have the level of quality and standards we expect here at Certikin, there really was no choice other than to create our own brand. Fast forward to December 2005 and, following

many meetings and factory visits, the Affinity brand was created.

The name Affinity quickly became synonymous with quality, developing products that had been carefully crafted to offer professional, ergonomic products for the spa, beauty, holistic, sports and medical sectors, delivering the gold standard in massage therapy equipment around the globe.

Our products can be found in many hotels, spas, leisure centres, top flight sports clubs, hospitals, therapy centres, clinics, luxury yachts and villas so, whether setting up/refurbishing a spa, treatment room or therapy centre or kitting out a team of mobile therapists, we have a couch solution for you.

The Affinity Team

Whether a one-off couch for a therapist working from home, or 400 couches for an Athlete's village at an international sporting event, with nearly 60 years of service to Certikin between them, **Max Bridges** (29 years with Certikin, 25 with Affinity) and **Bridget Muller** (29 years with Certikin, 8 with Affinity) are always happy to 'talk couch' and can be contacted on 01993 777770 or therapy-essentials@certikin.co.uk.

©Affinity

UK market leading equipment
for professional therapists



www.affinityequipment.co.uk



PRODUCT HIGHLIGHTS



AQUASPEED PUMPS

THE ULTIMATE IN POOL EFFICIENCY AND PERFORMANCE

Exclusively available from Certikin, the renowned Aquaspeed pump is engineered with cutting-edge technology to deliver exceptional power and efficiency. It is available in a range of sizes ranging from 0.5hp to 3hp, including variable speed and three phase options.

For those upgrading from an older Aquaspeed model, the latest version maintains the same dimensions, ensuring a seamless fit with the original pump's footprint and pipework connections.

VISION FILTERS

THE CLEAR CHOICE FOR YOUR NEXT FILTER INSTALLATION

The Vision range of domestic bobbin wound filters from Certikin are some of the most reliable and popular on the market. Using the latest in fibreglass winding technology, they are available in top and side mount versions, the latter of



which comes with the patented 10" lid, making servicing quick and easy.

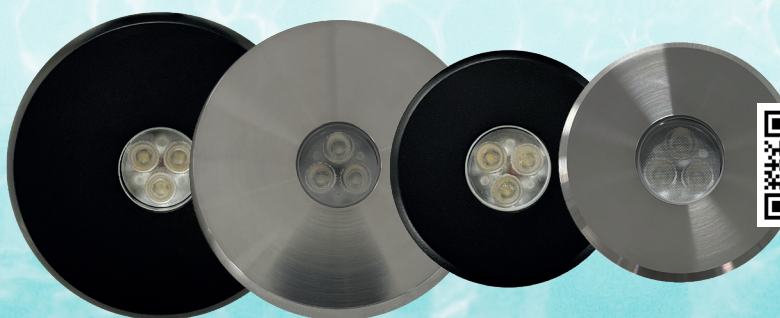
Backed up by an impressive 10-year full tank warranty, the unique design also features a see-through valve mounting ring for top mount models that allows a clear view of filtration and backwashing during operation.

PU2 LIGHTS

THE LEADING LIGHT IN SWIMMING POOL ILLUMINATION

The highly efficient PU2 Mini Push-Fit LED lights are available in both RGBW and white and are easy to install as well as having a high output and the neatest of finishes. The RGBW version is controllable via a smartphone using the free app, giving complete control over colour, sequences and brightness.

For concrete pools, the full 316-grade stainless steel body fits directly into a standard 1.5-inch pipe, leaving just the 2mm thick stainless-steel fascia on display in the pool. For liner applications the light screws into a standard Certikin inlet fitting leaving an attractive, clean finish.



MAINTENANCE EQUIPMENT

SERIOUS TOOLS FOR SPOTLESS POOLS

Keep your pool in pristine condition with the trusted performance of Certikin's maintenance equipment range. Designed for reliability and ease of use, Certikin offers everything from durable leaf nets and vacuum heads to robust telescopic poles and deep-cleaning brushes. Whether you're tackling daily upkeep or seasonal deep cleaning, each tool in the Certikin range is built to deliver professional-grade results with minimal effort. With a focus on quality materials and ergonomic design, Certikin maintenance equipment ensures your pool stays sparkling clean, safe, and swim-ready all year round.



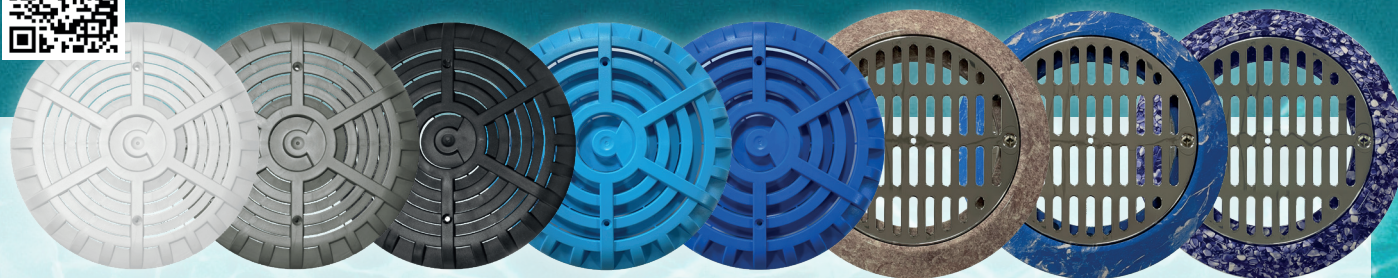
FASTLANE

REIMAGINE WHAT YOUR POOL CAN DO

Same pool, completely different experience. When you add a Fastlane Pro to a swimming pool, you expand the possibilities with Hydrodrive™ current technology. Achieve the versatility of uninterrupted swimming. Enjoy gentle rehabilitation, vigorous cross-training or give the children some active playtime.

With dozens of speed settings, from near-zero to race pace, Fastlane Pro is always ready to accommodate any mood and any activity level. By easily adapting to new or existing pools, the Fastlane Pro transforms the typical pool into a multi-use experience.





WOODEN POOLS

SUPERIOR WOODEN POOLS, BRITISH BUILT TO THE HIGHEST QUALITY

Certikin wooden pools are a superb addition to any garden with the attractive design blending perfectly with natural surroundings. Made of Scandinavian redwood and Iroko hardwood, they are built to the highest standard. The redwood walls are professionally notched in-house on the state-of-the-art machinery to guarantee ease of build and maximise the strength of the construction. They have no side buttresses which can be unattractive and take up valuable space, nor do they require any concreted-in steel supports, making installation far easier. The steel plates and shoes used in the construction of Certikin wooden pools have been designed to remove the need for extra external bracing found on other timber pools. All this adds up to give one of the strongest free-standing pools on the market.

The structural timber has a 10-year guarantee and being supplied from the UK's leading swimming pool equipment manufacturer you can be confident you are not just getting

excellent product quality, but the unrivalled service care that is available before and after your purchase.

PATTERNED POOL FITTINGS

THE ULTIMATE SEAMLESS POOL FINISH

Pool fittings play a vital role in ensuring that a swimming pool functions seamlessly. Traditionally these fittings have been white in colour which does not always complement the overall design of the pool. However, with Certikin's range of patterned fittings you can now get the perfect match.

Specifically tested and developed for swimming pool conditions they are available to complement three of our best-selling liner patterns – Riverstone, Blue Marble and Sublime. With each pattern, the full range of fittings is available including inlets, main drain and light fascia ensuring the ultimate seamless pool finish for your next liner pool project.

In addition to the existing and very popular black and grey fittings, the new mid blue and dark blue ranges have been carefully selected to blend

in with a variety of liners including Persia Blue, Blue Marble, Mosaic and Gemstone Light Blue.

GENIE BOILERS

LEADING THE WAY IN EFFICIENT POOL HEATING

The Certikin Genie range of gas condensing pool heaters is one of the world's only condensing pool heaters. They feature a water-to-water heat exchanger with cupro-nickel tubes to provide long lasting durability even on salt chlorinated pools. Using condensing technology, the Genie range delivers up to a fantastic 94% efficiency compared to standard direct fired pool heaters which typically operate at between 60 to 80%.

At the heart of every Genie lives a super quiet state of the art stainless steel heat engine. Using a fully modulating fan and gas valve, we guarantee a precise and clean burn every time with a perfect air/fuel mixture.



COVERSTAR HQ VISIT

OUR TEAM RECENTLY HAD THE OPPORTUNITY TO TRAVEL TO UTAH TO VISIT LATHAM POOL PRODUCTS AT THEIR MAIN COVERSTAR MANUFACTURING FACILITY.

This long-anticipated trip allowed us to meet with the team and gain a deeper understanding of the innovation and craftsmanship behind the Coverstar brand. Whilst free time was spent exploring Utah's remarkable natural landscapes – from its striking mountain ranges to its breathtaking canyons – the focus of the visit was firmly on the operations that bring Coverstar products to life.

Coverstar is renowned for its meticulous approach to manufacturing, producing every component in-house. From the smallest nuts and bolts to the robust cover fabrics, each element is carefully engineered to meet the brand's exacting standards. Central to their production process is an exclusive patented process that heat-seals webbing around a polymer bead and welds it to the cover in a single step. The result is an attractive seamless, colour-matched finish.

During the comprehensive factory tour, our team saw every stage of production such as how billets of metal were transformed into the precision components that form the backbone of the Coverstar system. They also witnessed the sophisticated fabric welding process, where each cover undergoes multiple quality checks before being prepared for shipment to the UK.

The visit not only reinforced the strength of our partnership but also the exceptional level of quality and innovation that goes into every system making Coverstar one of the best covers in the market.

MANUFACTURING

Each year, Coverstar manufactures and ships thousands of automatic cover

systems from each of its world-class manufacturing facilities. Coverstar typically ships these large, complex, custom systems within 48 hours with extraordinary quality and very few errors. Coverstar continually sets the highest standard for product features, quality, delivery and order accuracy. How was this accomplished? The secret to Coverstar's manufacturing success lies in its people, its willingness to invest in industry leading technology; and its commitment to applying state-of-the-art Lean manufacturing tools and principles.

SAFETY BENEFITS OF POOL COVERS

Coverstar automatic pool covers offer a number of safety benefits to give parents and pool owners peace of mind and have been tested and meet the safety standards outlined in ASTM F1346-91 (American Society for Testing and Materials). These guidelines were created to reduce the risk of drowning by inhibiting pool access to children under five years of age.

ASTM POOL COVER SAFETY SPECIFICATIONS

Weight support

The cover must be able to hold a minimum weight of 485lbs (the approximate average weight of two adults and one child)

Perimeter deflection test

All openings must be strong enough to prevent a test object from passing through.

Surface drainage test

Prevents a dangerous amount of water collecting on top of the cover.



Control-switch requirements

Any device used to control the automatic pool cover has to be permanently mounted in full view of the entire pool.

HOW SAFE ARE AUTOMATIC POOL COVERS?

Coverstar automatic pool covers create an impenetrable barrier to prevent children, pets, or any other unwanted animals or guests from entering your pool unattended. While pool covers are the best way to add an additional layer of protection around your swimming pool, they are not a substitute for proper pool safety or adult supervision.

Pool covers are often more reliable than other safety equipment, like fences, because they create a barrier that directly seals your pool off. Even with a fence, if someone is able to get in the pool area, a pool cover will prevent them from entering the pool without your permission.

There's no need to worry about unwanted access to your pool because the control switch requires a key to unlock the cover plate or a four-digit code to gain access. Coverstar offers the best protection available to keep your loved ones safe.



REDUCE POOL HEAT LOSS AND WATER EVAPORATION.

Every pool owner has to contend with some amount of heat loss and evaporation, but an automatic cover can make heat loss and evaporation more manageable. Learn how Coverstar automatic pool covers can help to keep your pool at a nice, warm temperature, minimize water evaporation, and reduce the need for costly pool maintenance.

Saving energy

While you will save your own energy by opening your pool with a switch vs. dragging a heavy pool cover, you can feel good knowing your automatic pool cover offers its own environmental and energy-saving benefits.

Because your pool is kept much cleaner when you use an automatic cover, pump and filter use can be reduced dramatically to just a few hours a day! This saves energy, which in turn, reduces pollution. Plus, pool covers can reduce evaporation, which means you don't need to constantly refill your pool or shock and balance the water, reducing the amount of chemicals required for ongoing maintenance.

A Coverstar automatic pool cover helps you save big on heating, electricity, water and pool chemicals, and lets you enjoy a cleaner, safer pool.

Preventing water evaporation

Water evaporation is a nuisance for any pool owner. When cool air hits warm pool water, it can lead to evaporation. One of the main culprits for water loss in pools and spas is evaporation. Water loss means more work for you to fill your pool and balance the water.

A swimming pool can lose up to a quarter-inch of water each day. This can be influenced by weather and environmental factors including wind

intensity, humidity and sunlight. A pool cover is one of the best ways to prevent evaporation. An automatic pool cover completely seals your pool when it's not in use to reduce water evaporation.

How to reduce pool heat loss

An automatic pool cover is one of the best ways to prevent pool heat loss because it keeps the warm water inside your pool and keeps cold air out so the water maintains a consistently comfortable temperature. Pool covers can reduce your pool heating costs by up to 70% by reducing evaporation. Simply seal your pool when it's not in use and let the pool cover do the rest!

HOW MUCH ENERGY DOES AN AUTOMATIC POOL COVER SAVE?

Consistent use of a pool cover offers these cost- and energy-saving benefits:



UP TO 90% REDUCTION
in evaporation



UP TO 70% REDUCTION
in pool heating costs



UP TO 50% REDUCTION
in electricity costs



UP TO 70% REDUCTION
in chemical use

COVERSTAR

HAVE YOU GOT THE BOTTLE?



DRYDEN AQUA CERTAINLY HAVE!

From beer bottles to water purifier: how green and brown glass is transformed into Activated Filter Media (AFM)

In a world grappling with water scarcity and pollution, innovative solutions are more critical than ever. One such innovation is **Activated Filter Media (AFM)** — a highly effective material used in water filtration systems that, surprisingly, began its life as an ordinary bottle. Through a carefully engineered process, discarded glass is transformed into a sustainable, high-

performance alternative to traditional sand or gravel used in water filters.

This article explores how a humble beer bottle becomes AFM, the science behind its transformation, and why this process matters for environmental sustainability and water purification.

WHY USE BEER BOTTLES?

Beer bottles, green and brown in colour, along with other types of container glass of the same colour, contain metal oxides which are chemically stable and physically strong.

This makes them an ideal raw material for AFM production. However, not all glass is recycled effectively. In many places, glass waste still ends up in landfills due to contamination or lack of demand.

By converting beer bottles into AFM, we not only **divert glass from the waste stream**, but also **create a high-value, sustainable product** that contributes to clean water access.

WHAT IS AFM?

Activated Filter Media (AFM) is an engineered filtration media made from recycled glass, designed to outperform conventional sand in water filtration systems. AFM is used in a wide range of applications, including:

- Drinking water treatment
- Wastewater treatment
- Swimming pool filtration
- Industrial water processing

Compared to sand and other glass media, AFM offers:

- Better filtration performance (removing 95% of particles down to 1 micron)
- Self-sterilizing properties (resisting bacterial growth)
- Longer service life and reduced backwashing frequency

THE TRANSFORMATION PROCESS: BEER BOTTLE TO AFM

1. COLLECTION AND SORTING

Recycling facilities collect post-consumer glass, including green, brown, coloured and clear bottles. The first step involves:

- **Sorting** by colour and removing contaminants (plastics, metals, ceramics).
- **Washing** to remove labels, adhesives, and organic residues.



2. CRUSHING AND MILLING

Cleaned glass bottles are then crushed into cullet (small pieces), which are milled into fine granules. The particle size is carefully controlled depending on the desired grade of AFM.

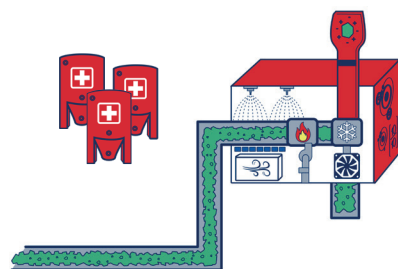


3. ACTIVATION PROCESS

Here's where the transformation truly happens. The glass granules undergo a **chemical activation and thermal curing** process designed to modify their surface structure and properties.

- The surface is **treated** to create a **hydrophobic surface**.
- The granules are then **heated** in a controlled environment to change the surface topology at a microscopic level.
- This structure not only captures fine particles but also resists the build up of organic biofilm (a common problem in sand filters).

The result is a **glass granulate** with an **increased surface area**, enhanced adsorption properties, and antimicrobial resistance.



4. GRADING AND QUALITY CONTROL

The finished AFM is graded into specific particle sizes and tested for:

- Hydrophilicity
- Chemical stability
- Filtration performance
- Backwash performance

Only the media that meets strict performance criteria is approved for use in water treatment systems.

BENEFITS OF AFM OVER SAND

Property	Sand	AFM
Filtration precision	~10 microns	Down to 1 micron
Bacterial resistance	Low (biofouling risk)	High (self-sterilizing)
Backwashing frequency	Frequent	Reduced (saves water)
Longevity	5-10 years	>20 years
Environmental impact	High (mined material)	Low (recycled material)

ENVIRONMENTAL AND ECONOMIC IMPACT

Transforming beer bottles into AFM creates a **closed-loop recycling system** with multiple benefits:

- Reduces landfill waste by giving glass a second life.
- Lowers carbon footprint compared to manufacturing virgin glass or sand.
- Provides clean water with less energy and chemical usage.
- Supports the circular economy by turning waste into a valuable product.



AFM CERTIFICATIONS

DWI (UK) Reg. 31 certification for potable water use.

NSF-61 certification for use in drinking water treatment.

NSF-50 certification without limitations for use in swimming pool water treatment.

IFTS – verified 95% particle removal down to 1 micron.

BS EN 17978: 2024 Products used for treatment of water intended for human consumption and swimming pool water. Glass beads and glass granulate.

FINAL THOUGHTS

Turning a beer bottle into Activated Filter Media is a shining example of how **waste can become a resource**. Through smart engineering and sustainable thinking, what once held a cold drink can now **help deliver clean, safe water** to swimming pools, homes, industries, and communities around the world.

NEXT TIME YOU RECYCLE A GLASS BOTTLE, REMEMBER – IT MIGHT BE PLAYING A VITAL ROLE IN THE FUTURE OF WATER PURIFICATION.

ADVANTAGES OF SWIMMING HEAT PUMP DEHUMIDIFIERS

DH35, DH65 & DH120

WHY DEHUMIDIFY?

An indoor swimming pool is a wonderful leisure and exercise environment but the evaporation from the water surface poses real problems for the building structure. Prolonged exposure to high humidity causes walls, decorative finishes and roofs to deteriorate rapidly. Personal comfort is also of prime importance. Too high or low humidity causes personal discomfort and unless the environment is controlled, bathers will be prevented from enjoying the swimming pool. Bathers appreciate comfortable relative humidity in the range 55%-65%.

CONDENSATION

Left unchecked, it can be a major problem in indoor swimming pools and spas. Condensation, formed as water evaporating from the pool or spa surface, pushes up air humidity before condensing on cold surfaces on or in the building structure and will lead to mould or even structural damage or collapse.

PROBLEMS

The problems caused by excessive moisture include corrosion of pool side equipment, frequent redecoration, building deterioration, an uncomfortable swimming environment as well as unsightly condensation, damp, mould, mildew and misting.

The Solution: The answer to this problem is the Dantherm range of stylish dehumidifiers for humidity control and energy recovery in indoor swimming pools.

OUR PRODUCTS:

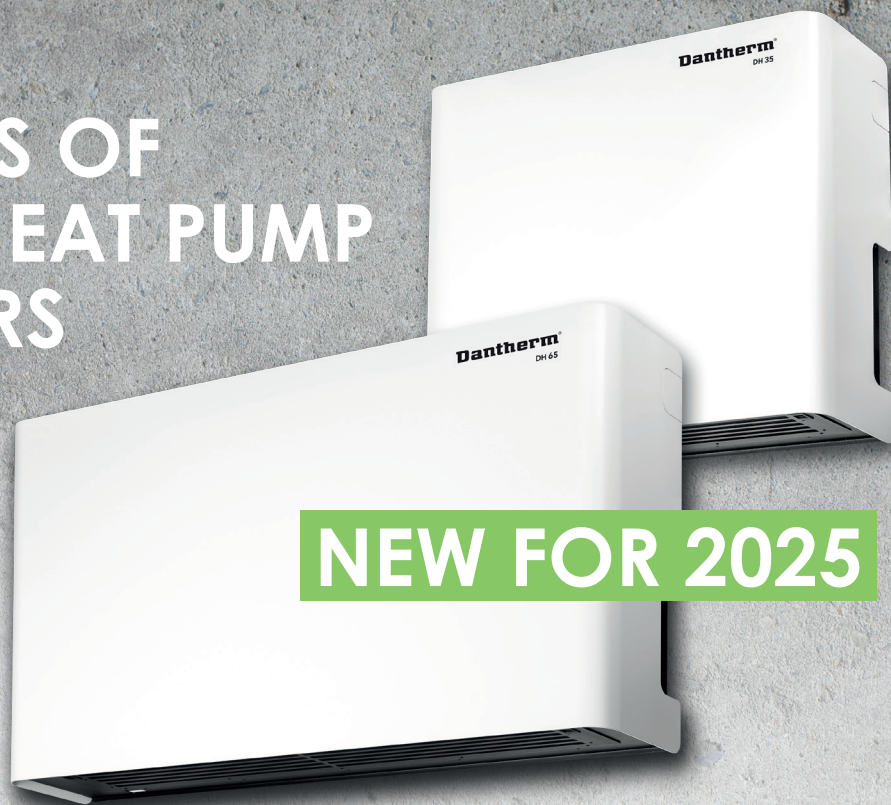
The new range of Dantherm air-to-air heat pump dehumidifiers are high performance and low cost units. Compared to ducted system dehumidifiers these high performance and low cost units minimise the need for costly air distribution ductwork. Operating on the heat pump principle, these units recirculate pool air by removing the moisture content and delivering warm, dry air back to the pool hall. By working this way, they maintain a comfortable humidity, minimise condensation and keep heating costs as low as possible.

Energy Saving: Removing humidity from the air with a heat pump enables the Dantherm dehumidifier to absorb latent energy and return it into the pool hall air as "free" air heating. Its heat pump technology converts 2.5kW to air heating for every 1kW electricity consumed!

As well as the range of wall mounted units, the new range also features two floor standing models. All models come with a two-year parts and labour manufacturer's warranty.

FEATURES AND BENEFITS:

- Designed to fit on the existing Vaporex wall mounted bracket
- Simple installation
- Factory fitted electrical and LPHW heating coils
- Dual position LPHW pipe work connections
- Upgraded capacity LPHW heating coils
- Inbuilt electric heater thermostat
- Electronic humidistat
- Aluminum housing
- R454C refrigerant
- Operating range temperature: 5°C to 40°C





I-PAC PRO

Next generation of high-performance inverter heat pumps



Extended output range



Remote monitoring and fault diagnosis



Touchscreen and remote control functionality



Suitable for all-year use



Eco-friendly refrigerant - energy-efficient inverter technology



Low noise level for sensitive locations



Enduring design



WHAT IS INCLUDED IN A HEAT PUMP WARRANTY?

At a time when most heat pump warranties offered just 1 year, often parts only, Calorex stood out by providing a full 3-year parts and labour warranty—backed by an experienced in-house service team and a network of nationwide service agents.

When Dantherm introduced the Calorex IPT and VPT inverter heat pump ranges in 2019, that commitment to quality and support was extended even further—with an industry-leading 5-year comprehensive parts and labour warranty.

While more manufacturers are now advertising 5-year warranties, not all are created equal. Phrases like "up to 5 years" or "subject to terms and conditions" often hide important details. In many cases, the headline warranty only covers parts—leaving you responsible for labour costs that can exceed the value of the parts themselves. Some brands offer optional labour cover but for an additional 15 – 20% of the product cost.

Thanks to advances in build quality, refrigerant issues are now rare, leaving electrical issues with circuit boards

and fan motors as the most likely to need attending to. Some manufacturers also promote eye-catching long-term warranties of 10 – 12 years, but these typically only apply to components like heat exchangers or compressors, which suppliers know are the least likely to fail.

Equally important is who performs the repair. For both warranty validity and safety, any servicing should be carried out by properly trained technicians.

So if you want a heat pump backed by a simple to understand, no-nonsense, on-site 5 year comprehensive parts and labour warranty visit our website

or speak to our team about the leading range of heat pumps available including the NEW I-PAC PRO.

NEW I-PAC PRO RANGE OF INVERTER HEAT PUMPS

The I-PAC PRO range is the next generation of high-performance inverter heat pumps that are designed specifically for energy efficient heating of swimming pools.



SUSTAINABLE HEATING SOLUTIONS FOR DELTA & VARIHEAT SYSTEMS



THE DELTA AND VARIHEAT RANGES FROM DANTHERM GROUP AVAILABLE EXCLUSIVELY FROM CERTIKIN, ARE PURPOSE BUILT ENVIRONMENTAL CONTROLS UNITS SPECIFICALLY DESIGNED FOR INDOOR SWIMMING POOLS.

They are different from most dehumidifiers as they remove moisture using an integral heat pump which also recover the latent energy which is used to assist the air and water heating. By utilising this method, a heat recirculation cycle is created, and energy costs are kept to a minimum. The potential energy savings are huge. In fact, compared to more traditional types of heating and ventilation methods, running costs savings of over 50% are achievable while corresponding CO₂ emissions can dramatically reduce by up to 70%. Total of peace of mind is provided as commissioning is included as standard together with a two year on sites part and labour warranty. The Variheat's endless configuration options offers the ultimate in flexibility to suit every plant room.

They are designed to provide both air and water heating as well as dehumidification. Traditionally, these units operate with hot water supplied by a standard boiler. However, in alignment with Certikin's commitment to renewable energy, they have established a collaboration with Global Energy Systems. This partnership enables them to offer high temperature air source heat pumps as a more environmentally conscious alternative for the heat source.

Designed to work specifically with the UK climate, they will outperform gas, oil and electric systems delivering over 300% efficiency. All models available offer remote monitoring which enables live performance data to be fed back to Global Energy Systems and if possible, issues to be fixed remotely.

THE CURRENT LEAD TIME FOR DELTA AND VARIHEAT UNITS IS CURRENTLY JUST 5 – 6 WEEKS. FOR FURTHER DETAILS AND TO PLACE YOUR ORDER SPEAK TO A MEMBER OF OUR H&V DIVISION.



Global Energy
Systems

THE /COOL/ POOL

Certikin International Ltd
Unit 4, Tungsten Park
Colletts Way
Witney
Oxfordshire
OX29 0AX

☎ 01993 777200

✉ info@certikin.co.uk

www.certikin.co.uk

Opening Hours

8.30am - 5pm Monday to Thursday
8.30am - 4.30pm Friday

Collection Desk Hours

8.30am - 4.30pm Monday to Thursday
8.30am - 4pm Friday

Customer Returns

✉ cs@certikin.co.uk

UK - Order Processing

Placing orders, order progress,
stock availability and price enquiry.

☎ 01993 778855

✉ orders@certikin.co.uk

Transport Team

For any delivery related enquiries.

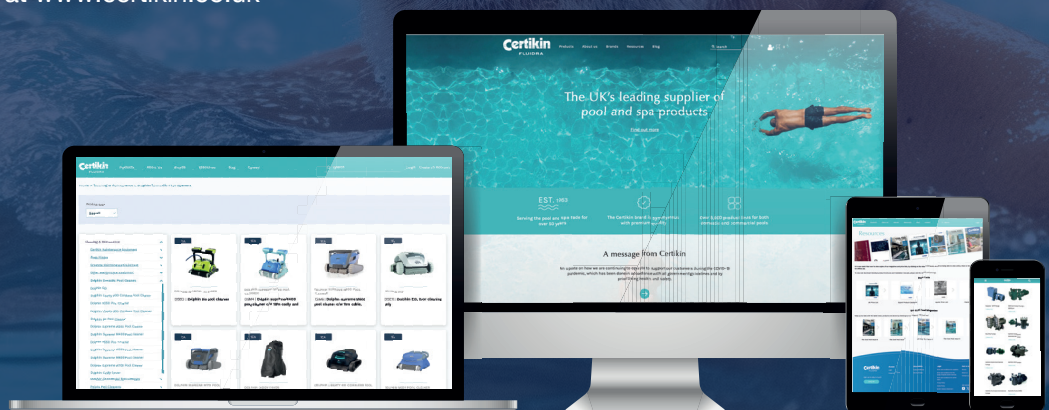
☎ 01993 777200

✉ eta@certikin.co.uk

Have you signed up to the Certikin website?

The Certikin website has been designed with you, the customer in mind. Whether it be ordering from our full range of products and spares, downloading technical information, or just reviewing past orders or invoices, you can do it all – anytime, anywhere.

Register for your account at www.certikin.co.uk



Certikin
FLUIDRA